

# 4 BEDROOM HOUSE

TERRACE 5 / BLOCK 2 & 3 / PLOT NUMBERS 4-10\*  
 TOTAL AREA 1,363 sq ft / 126.7 sq m

## GROUND FLOOR

Kitchen / Dining  
 5.34m x 3.91m  
 17' 6" x 12' 9"

## FIRST FLOOR

Living  
 5.34m x 4.37m  
 17' 6" x 14' 4"

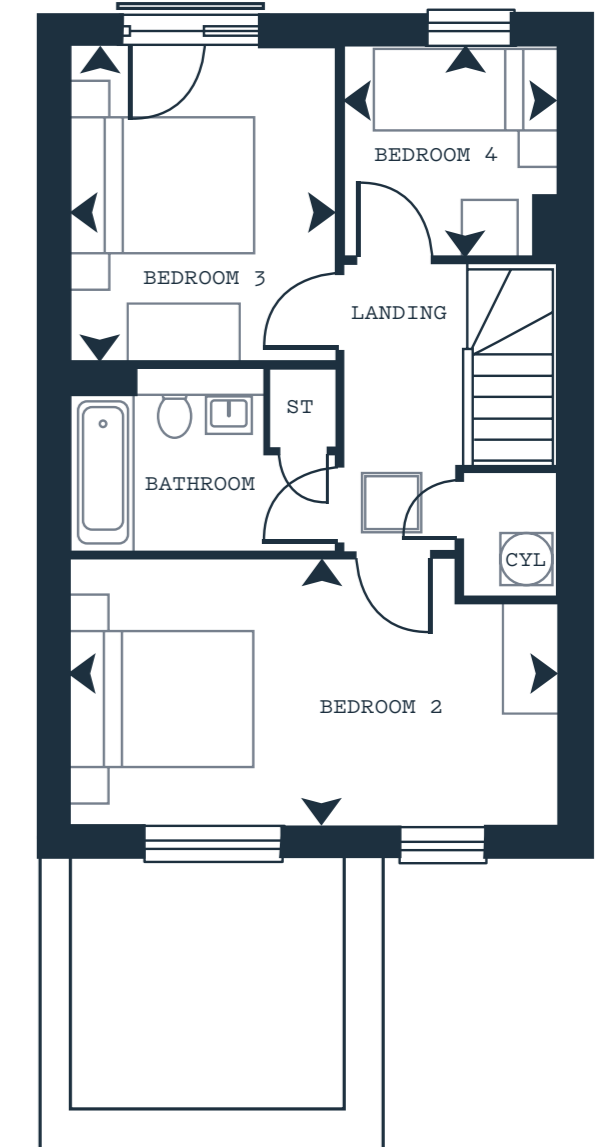
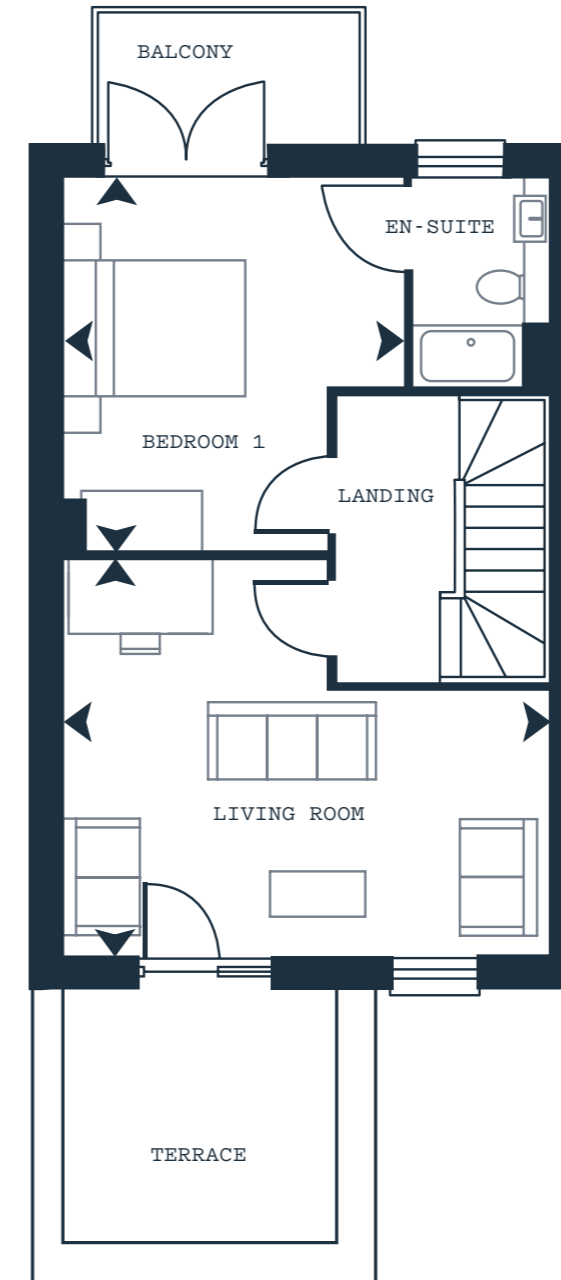
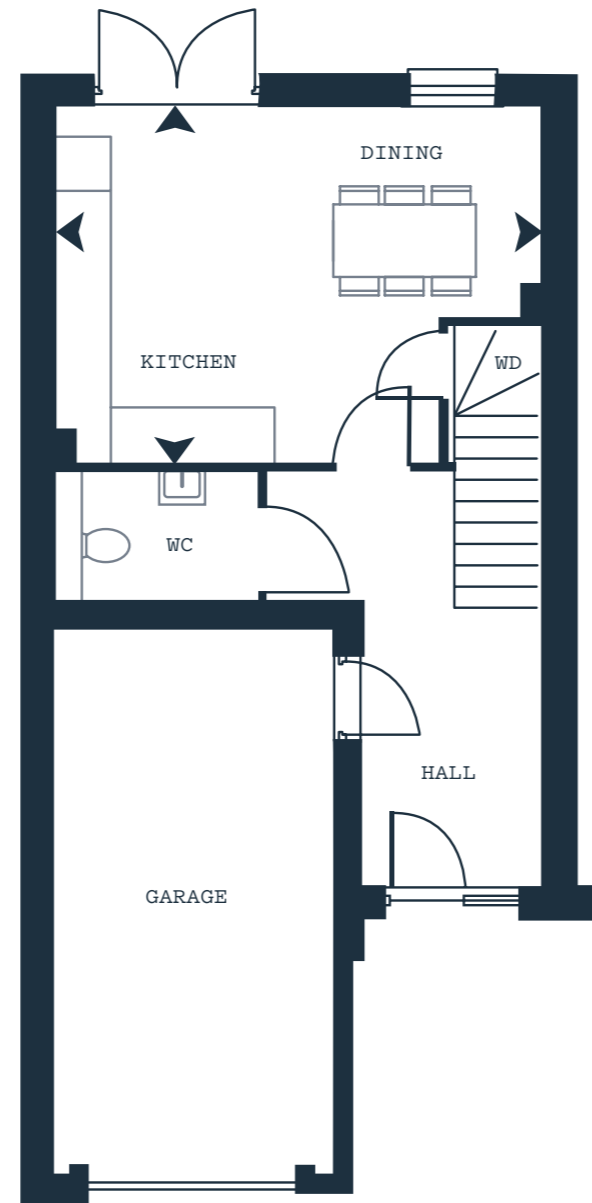
Bedroom 1  
 3.74m x 4.10m  
 12' 3" x 13' 5"

## SECOND FLOOR

Bedroom 2  
 5.34m x 2.92m  
 17' 6" x 9' 7"

Bedroom 3  
 2.90m x 3.46m  
 9' 6" x 11' 4"

Bedroom 4  
 2.34m x 2.30m  
 7' 8" x 7' 6"



\*Plots 5, 7, 8 & 10 are handed. Dimensions noted are estimated measurements for Plot 6. Dimensions slightly differ for other plots. Please ask a Sales Representative for more information.